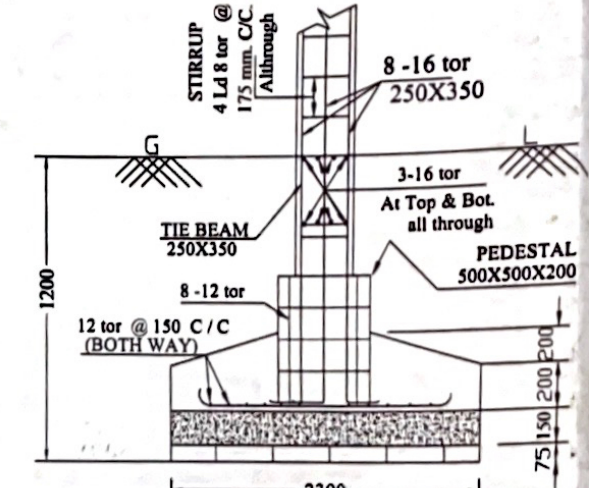


SCHEDULE OF R.C.C. FLOOR BEAM

BEAM MKD	SIZE	REINFORCEMENT AT SPAN			REINFORCEMENT AT SUPPORT		
		TOP	BOTTOM	STIRRUP	TOP	BOTTOM	STIRRUP
B1	250X400	2-16 tor	5-16 tor	21d 8 tor @ 150 C/C	5-16 tor	4-16 tor	21d 8 tor @ 150 C/C
B2	250X450	2-16 tor	5-16 tor	21d 8 tor @ 125 C/C	6-16 tor	2-16 tor	21d 8 tor @ 125 C/C
B3	250X400	2-12 tor	4-12 tor	21d 8 tor @ 200 C/C	4-12 tor	2-12 tor	21d 8 tor @ 200 C/C
B4	250X400	2-12 tor	2-12 tor + 3-16 tor	21d 8 tor @ 200 C/C	2-12 tor + 4-16 tor	2-12 tor	21d 8 tor @ 200 C/C
B5	250X400	2-16 tor	2-16 tor	21d 8 tor @ 200 C/C	2-16 tor	2-16 tor	21d 8 tor @ 200 C/C
B6	250X350	2-12 tor	2-12 tor + 2-16 tor	21d 8 tor @ 200 C/C	2-12 tor + 2-16 tor	2-12 tor	21d 8 tor @ 200 C/C
B7	250X350	2-12 tor	2-12 tor + 3-16 tor	21d 8 tor @ 200 C/C	2-12 tor + 4-16 tor	2-12 tor	21d 8 tor @ 200 C/C
B8	250X350	2-12 tor	2-12 tor + 2-16 tor	21d 8 tor @ 200 C/C	2-12 tor + 3-16 tor	2-12 tor	21d 8 tor @ 200 C/C
B9	250X300	2-12 tor	2-12 tor + 2-16 tor	21d 8 tor @ 200 C/C	2-12 tor + 2-16 tor	2-12 tor	21d 8 tor @ 200 C/C
B10	250X300	2-12 tor	4-12 tor	21d 8 tor @ 200 C/C	4-12 tor	2-12 tor	21d 8 tor @ 200 C/C
TB.	250X350	3-16 tor	3-16 tor	21d 10 tor @ 150 C/C	3-16 tor	3-16 tor	21d 8 tor @ 125 C/C

SCHEDULE OF COLUMN

COLUMN MKD	SIZE IN ALL FL.	REINFORCEMENT		LATERAL TIES
		GR. FL. & 1 ST FL.	2 ND FL. & 3 RD FL.	
C7, C8	250 X 400	4-20 tor + 6-16 tor	6-16 tor + 4-12 tor	FOR 8 NOS. BAR.
C2, C3	250 X 400	10-16 tor	4-16 tor + 6-12 tor	
C10, C11	250 X 400	8-16 tor	4-16 tor + 4-12 tor	FOR 10 NOS. BAR.
C5, C6, C9, C12, C13	250 X 400	8-16 tor	4-16 tor + 4-12 tor	
C1, C4, C14, C15, C16, C17, C18	250 X 350	4-16 tor + 4-12 tor	8-12 tor	



DETAILS OF COL. FOUNDATION
SCALE: 1:25

SCHEDULE OF R.C.C. FOUNDATION (ISOLATED)

FDN. MKD.	COLUMN MKD.	SIZE (mm x mm)	DEPTH	REINFORCEMENT	
				SHORTER DIRECTION	LONGER DIRECTION
F1	C5, C6, C9, C13	2300 X 2300	450 TO 250	12tor @ 150 C/C	12 tor @ 150 C/C
F2	C1, C4, C14, C18	2000 X 2000	350 TO 200	12 tor @ 200 C/C	12 tor @ 200 C/C

SCHEDULE OF R.C.C. FOUNDATION (COMBINED FOOTING)

FDN. MKD.	COLMN. FDN. MKD.	SIZE (mm x mm)	DEPTH	REINFORCEMENT	
				SHORTER DIRECTION	LONGER DIRECTION
CF1	(C11 + C16)	1900X5600	300 TO 150	12 tor @ 175 C/C	10tor @ 150 C/C
CF2	C12 + C17	1700X5600	350 TO 150	12 tor @ 175 C/C	10tor @ 150 C/C

SCHEDULE OF R.C.C. SLAB

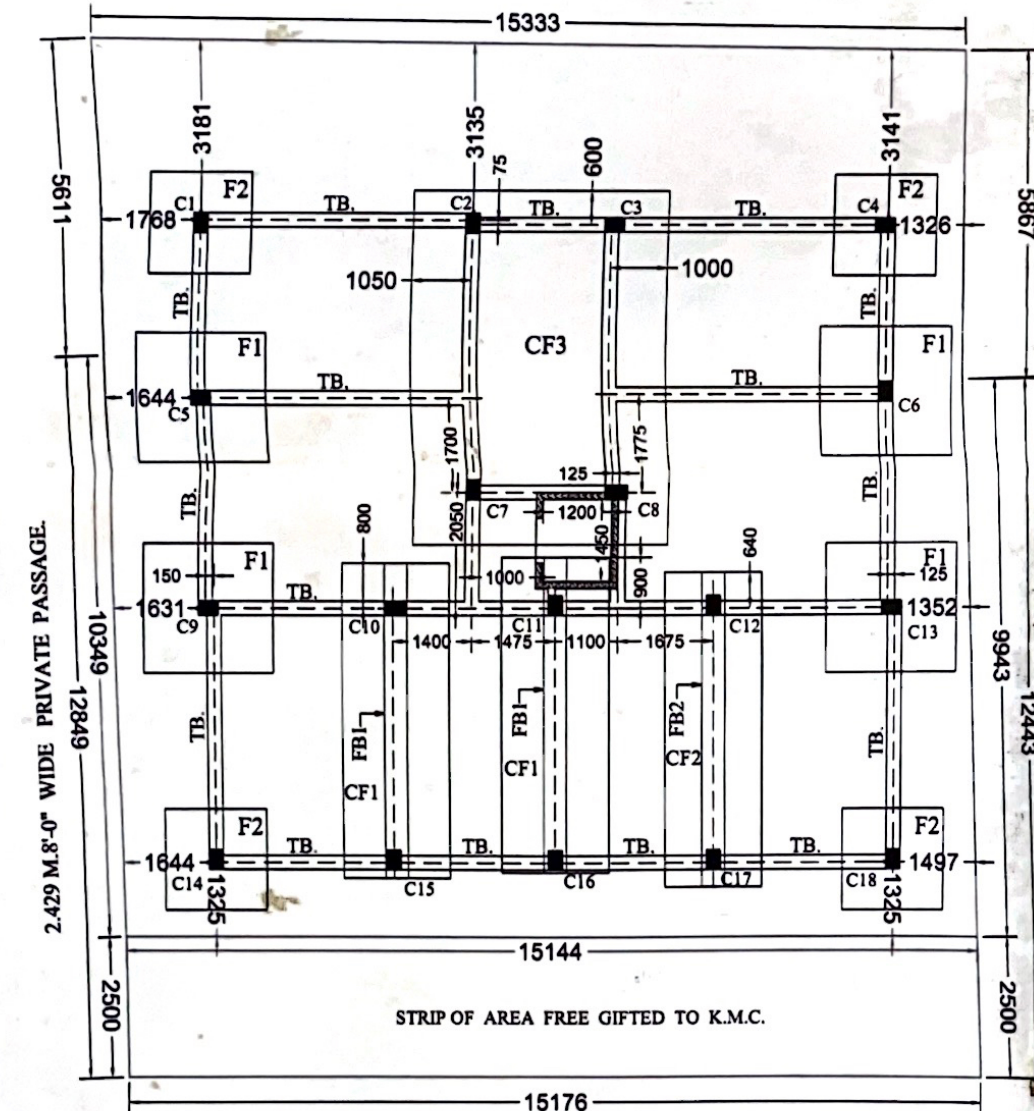
PANEL MKD.	THICKNESS OF SLAB	REINF. SHORTER DIRECTN.		REINF. IN LONGER DIRECTN.	
		SUPPORT	SPAN	SUPPORT	SPAN
S1	125 mm	8 tor 125 C/C	8 to 125 C/C	8 tor 200 C/C	8 to 200 C/C
S2	110 mm	8 tor 100 C/C	8 to 100 C/C	8 tor 200 C/C	8 to 200 C/C
S3	110 mm	8 tor 125 C/C	8 to 125 C/C	8 tor 200 C/C	8 to 200 C/C
S4	100 mm	8 tor 150 C/C	8 to 150 C/C	8 tor 200 C/C	8 to 200 C/C

SCHEDULE OF R.C.C. FOUNDATION (COMBINED FOOTING)

FDN. MKD.	COLMN. FDN. MKD.	SIZE (mm x mm)	DEPTH	DIRECTION	REINFORCEMENT			
					SPAN		SUPPORT	
					TOP	BOTTOM	TOP	BOTTOM
CF3	C2 + C3 + C7 + C8	4500 X 6300	600	LONGER	16tor @ 100 C/C	12tor @ 150 C/C	16tor @ 200 C/C	12tor @ 150 C/C
				SHORTER	12tor @ 150 C/C	12tor @ 150 C/C	12tor @ 150 C/C	12tor @ 150 C/C

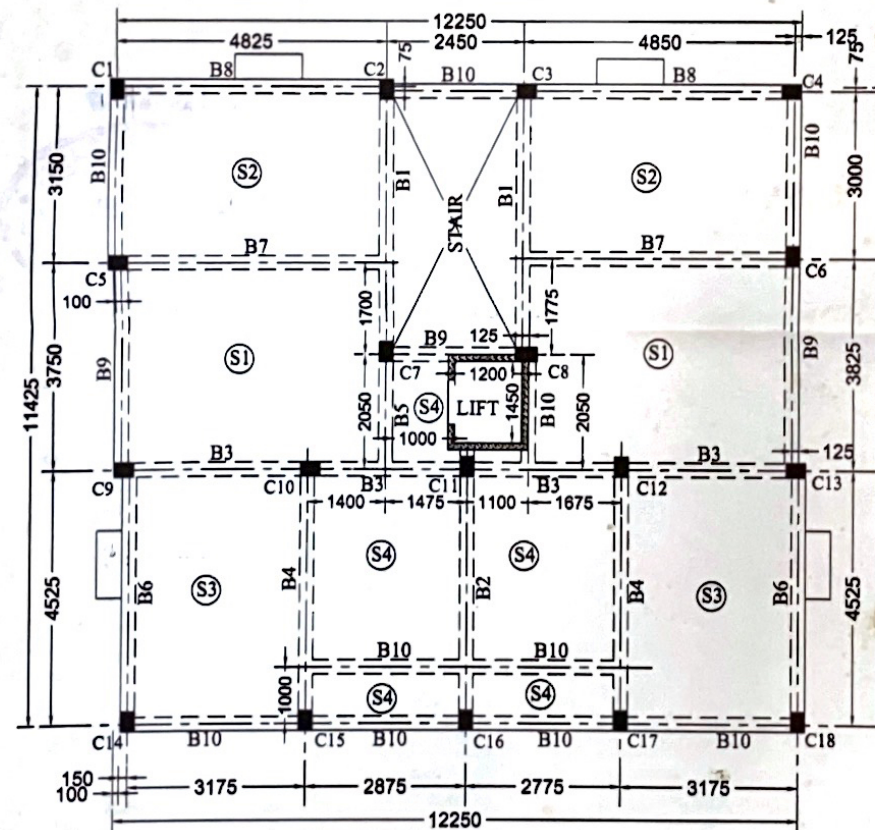
SCHEDULE OF R.C.C. B. BEAM

FDN. MKD.	SIZE (mm x mm)	DEPTH	REINFORCEMENT				STIRRUP	
			SPAN		SUPPORT			
			TOP	BOTTOM	TOP	BOTTOM		
FB1	400 X 900	600	C10 - C15 3-16 tor + 6-20 tor	3-16 tor	C10, C15, C11, C16	3-16 tor	4-16 tor	4 L 10 tor @ 175 C/C TO 300 C/C
FB2	400 X 900	600	C12 - C17 3-16 tor + 5-20 tor	3-16 tor	C12, C17	3-16 tor	4-16 tor	4 L 10 tor @ 200 C/C TO 200 C/C



FOUNDATION PLAN
SCALE: 1:100

NOTE :-
CONCRETE GRADE - M 20
STEEL GRADE - Fe 415



TYP. FLOOR SLAB & BEAM MARKING PLAN

SCALE: 1:100

NOTE :-
CONCRETE GRADE - M 20
STEEL GRADE - Fe 415

M/S. CREATION
Rupa Dharchowdhury - Partner
Snigdha Saha - Partner
Saxmitha Pal - Partner
SMT. RUPA DHAR CHOWDHURY
SMT. SNIGDHA SAHA AND
SMT. SARMISTHA PAL
PARTNERS OF 'M/S. CREATION'
SIGN OF OWNER

BASUDEB PAL
B.C.E., L.B.S. (K.M.C.)
E.14/A, Baghajata Station Road,
Kolkata - 700 086
License No : L.B.S. / 1 / 620
SIGN OF L.B.S.

THE STRUCTURAL DESIGN & DRAWINGS BOTH THE FOUNDATION & STRUCTURE OF THE BUILDING HAS BEEN MADE BY ME CONSIDERING ALL POSSIBLE LOADS INCLUDING SEISMIC LOAD AS PER N.B.C. OF INDIA & CERTIFIED THAT IT IS SAFE & STABLE IN ALL RESPECT. SOIL TESTING HAS BEEN DONE BY DR. S. CHAKRABORTY, GEOTECHNICAL ENGINEER FOR MAS OF 4, GARFA MAIN ROAD, KOLKATA - 75, THE RECOMMENDATIONS OF SOIL TEST REPORT HAS BEEN CONSIDERED DURING STRUCTURAL CALCULATIONS.

S. Chakraborty
S. Chakraborty
B.C.E. M. Tech. Soil (HT) MIE (INDIA)
Geo-tech No. 18/1,
Kolkata Municipal Corporation
1/1, New Santoshpur Main Road
Kolkata
Dr. Sankar Chakraborty
Geotechnical Engineer
K.M.C. Geo-tech No: 1/18
BASUDEB PAL
B.C.E.
Structural Engineer (K.M.C.)
E.S.E./11/464
SIGN OF STRUCT. ENGG

STRUCTURAL PLAN OF PROPOSED G+III STORED RESIDENTIAL BUILDING U/S.393A OF K.M.C. ACT.-1980, K.M.C.BUILDING RULE-2009, AT PREMISES NO.-8J, BAISHNAB GHATA BYE LANE. WARD NO.-100 BOROUGH-X.



SCALE 1:100 EXCEPT MENTIONED